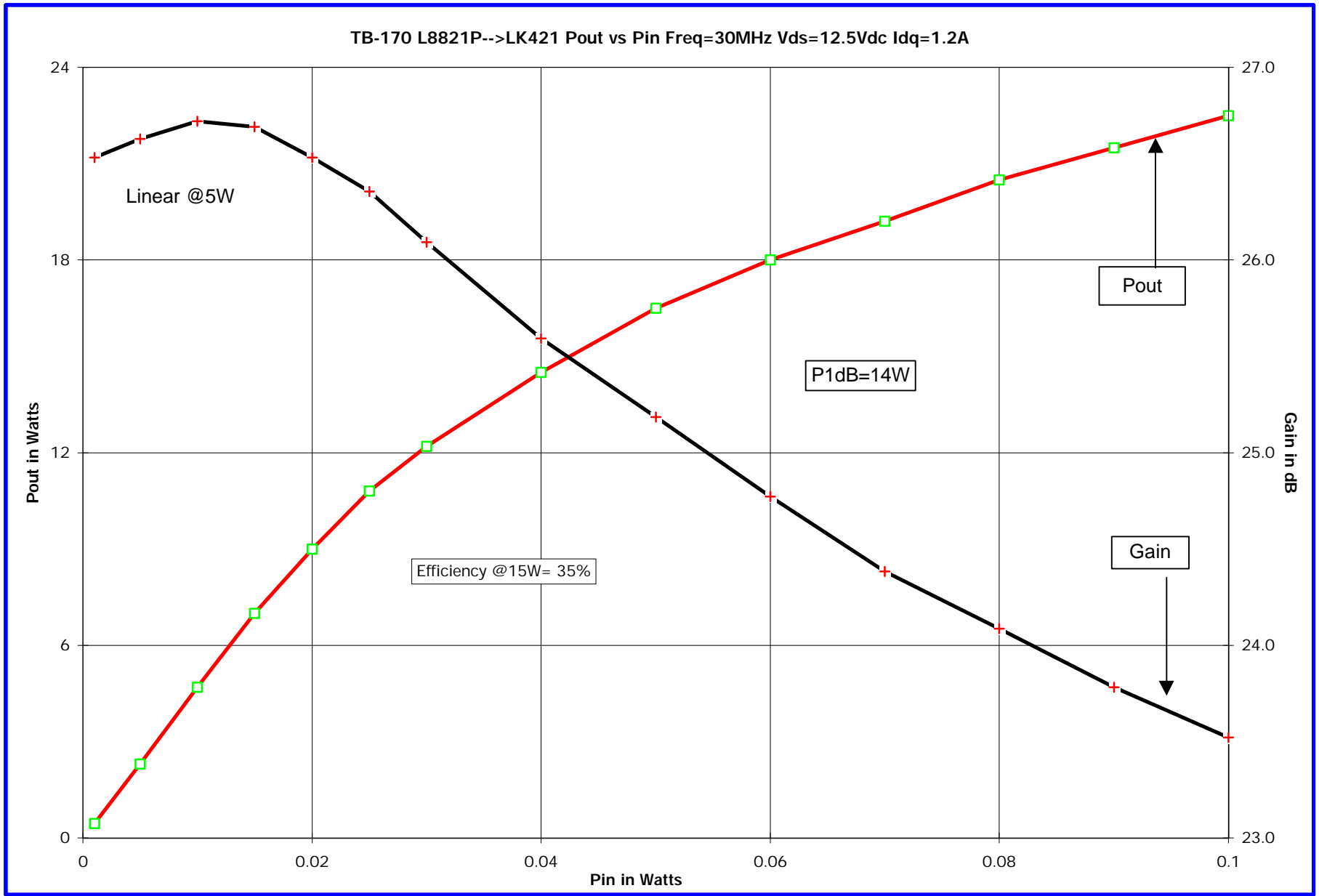
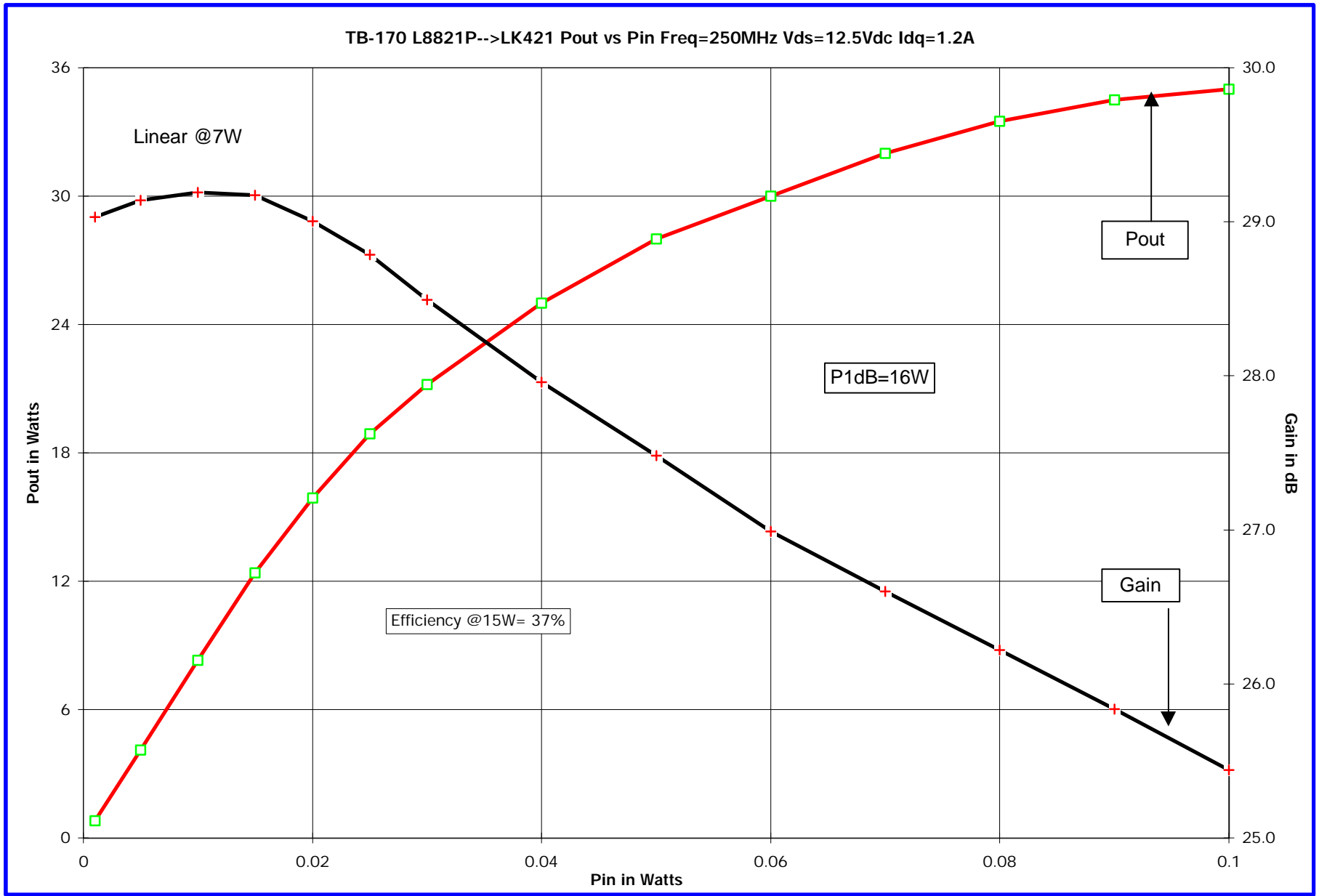


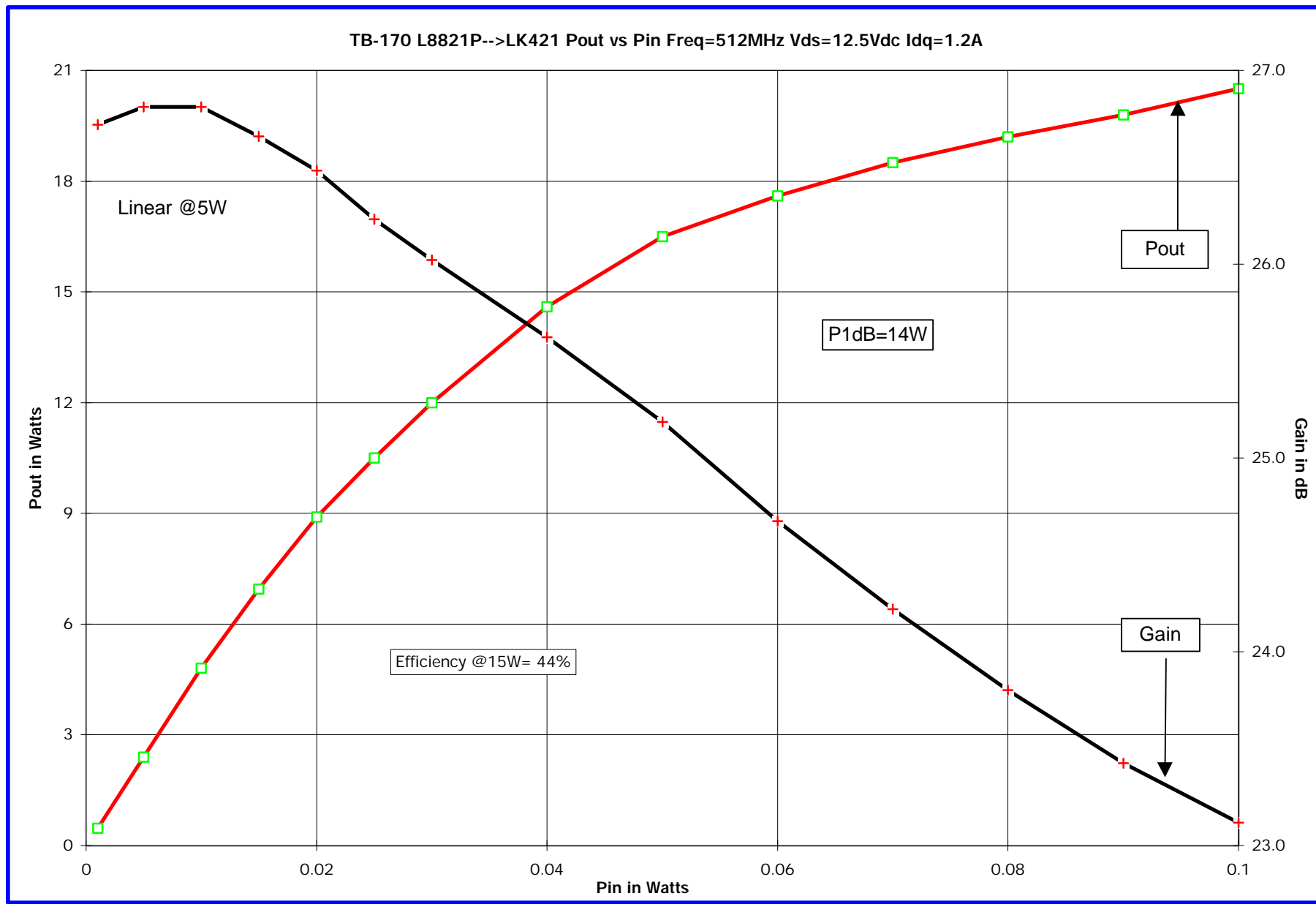
Polyfet RF Devices



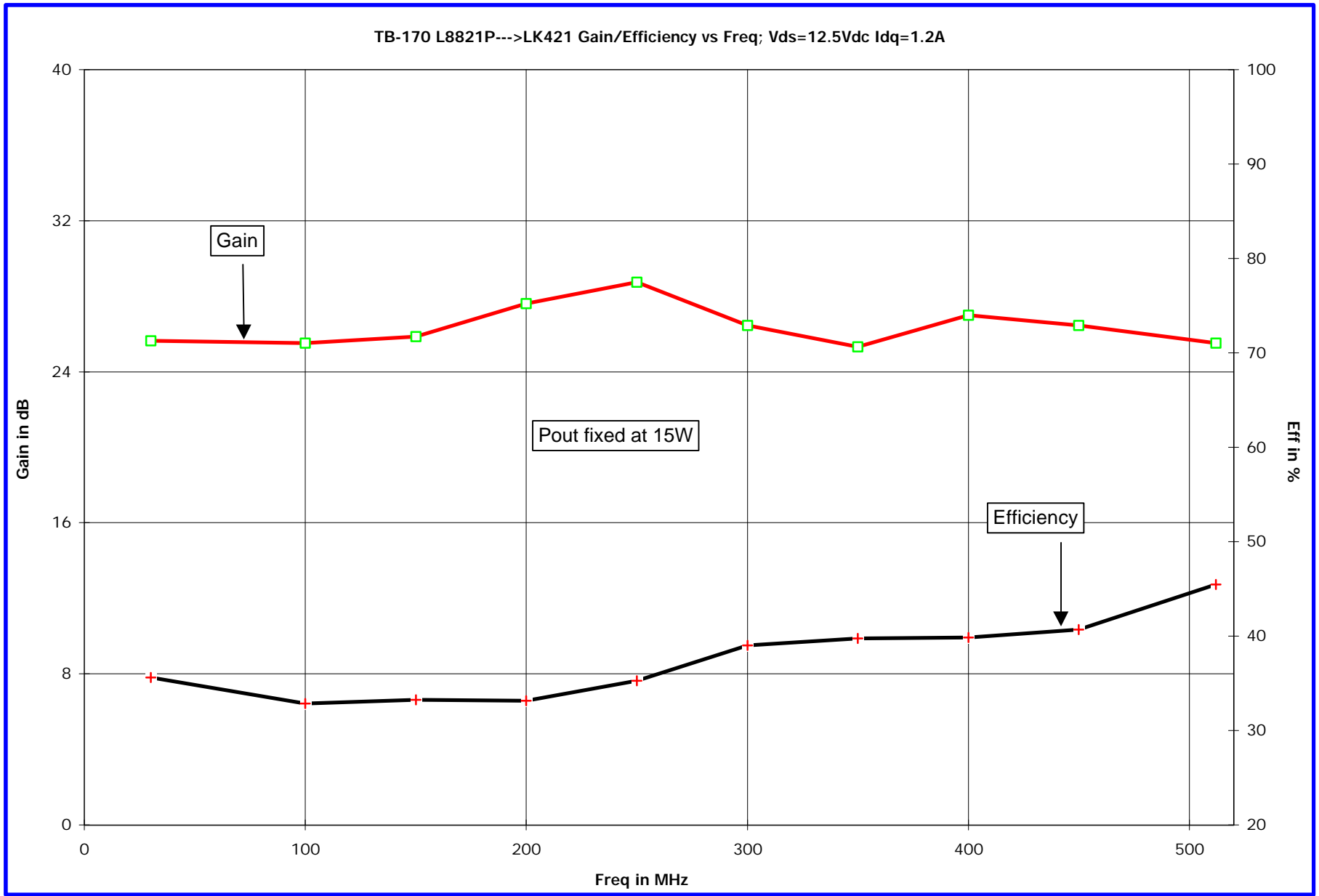
Polyfet RF Devices

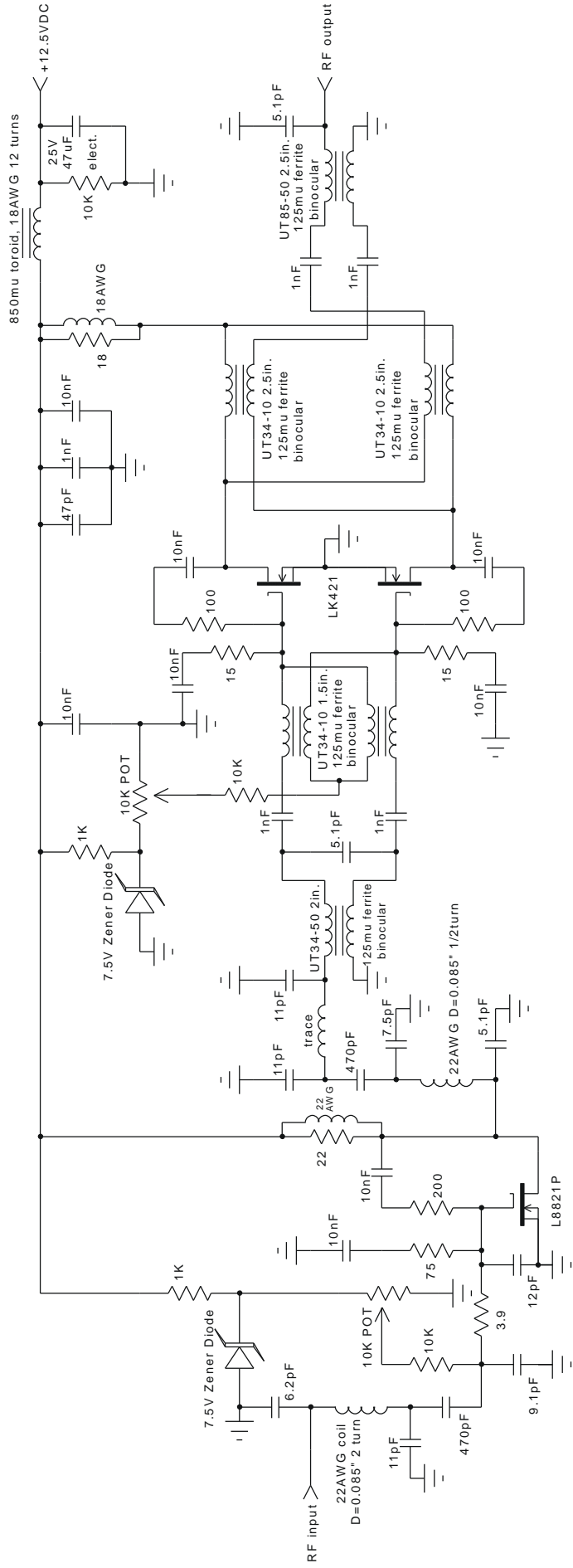


Polyfet RF Devices



Polyfet RF Devices





DRN BY	Cunningham	8/16/02
CHKD	J Citrolo	5/29/02
ELECT	J Citrolo	5/29/02
MECH	Cunningham	8/16/02
PROC		
QUAL		
PGMS		

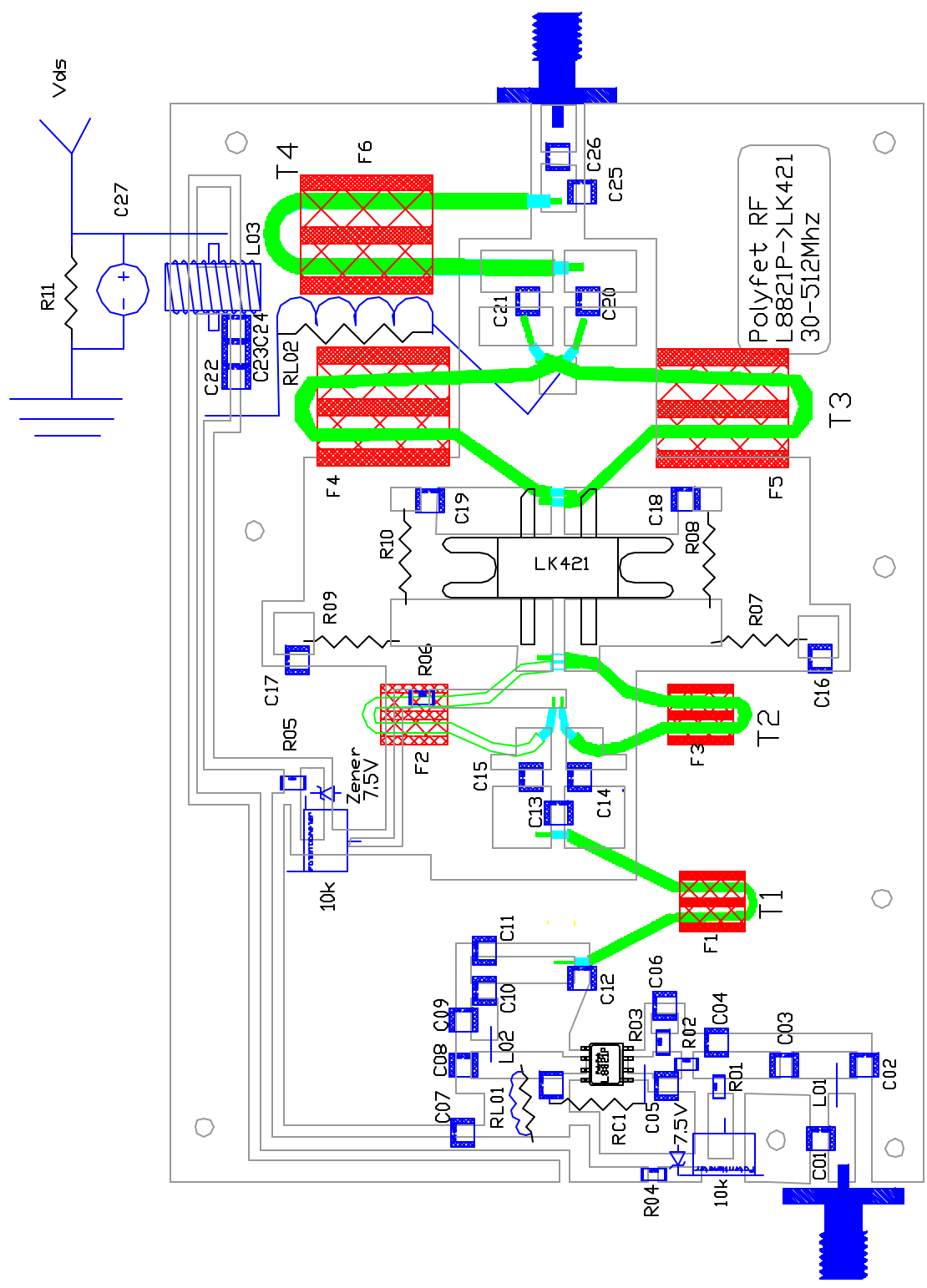
Polyfet RF Devices

TB 170 30-512Mhz 15W P1dB

SIZE	A
REV	L8821P->LK421 Vds=12.5V/dc Idq=1.2A

C01	ATC-100B	6.2pF
C02,C11,C12	ATC-100B	11pF
C03,C10	ATC-100B	470pF
C04	ATC-100B	9.1pF
C05	ATC-100B	12pF
C06,C07	ATC-100B	10nF
C16,C17		
C18,C19,C24		
C08,C13,C25	ATC-100B	5.1pF
C09	ATC-100B	7.5pF
C14,C15	ATC-100B	1nF
C20,C21	ATC-100B	1nF
C23,C26		
C22	ATC-100B	47pF
C27	25V 47uF electrolytic	
R01	1206 10k ohm	
R02	1206 39ohm	
R03	1206 750ohm	
R04,R05	1206 1k ohm	
R07,R09	174W 15ohm	
R08,R10	2W 100ohm	
R06,R11	174W 10k ohm	
RC01	10nF +200ohm	
RL01	22AWG, 22ohm	
RL02	18AWG, 18ohm	
L01	22AWG coil 1465nl 2-turn	
L02	22AWG coil 1085nl 1/2-turn	
L03	18AWG toroid, 18AWG 12-turns	
F1-3	125mu BN-61-2402	
F4-6	125mu 12-36S-K	
T1	UT34-50 2in.	
T2	UT34-10 1.5in.	
T3	UT34-10 2.5in.	
T4	UT85-50 2.5in.	

PCB FR4, Er=3.55
.064in. thick



DRN BY	Cunningham	5/29/02
CHKD	J. Estrada	5/29/02
ELECT	J. Estrada	5/29/02
MECH	Cunningham	5/29/02
PRC		
DRAW		
PBKS		

POLYFET RF DEVICES	
TB170 30-512Mhz 15W P1dB	
SIZE	FSDM NO.
A	
Vds=12.5Vdc, Idq=1.2A	
SCALE	pcb 1:1
SHEET 1 OF 1	